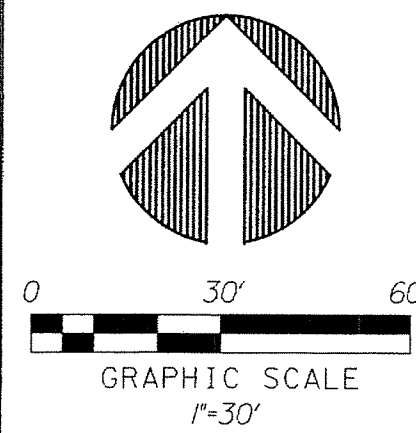


PERIMETER SURVEYING & MAPPING
 Prepared by: Jeff S. Hodapp, P.S.M.
 Certificate of Authorization No. LB7264
 947 Clint Moore Road
 Boca Raton, Florida 33487
 Tel: (561) 241-9988
 Fax: (561) 241-5182

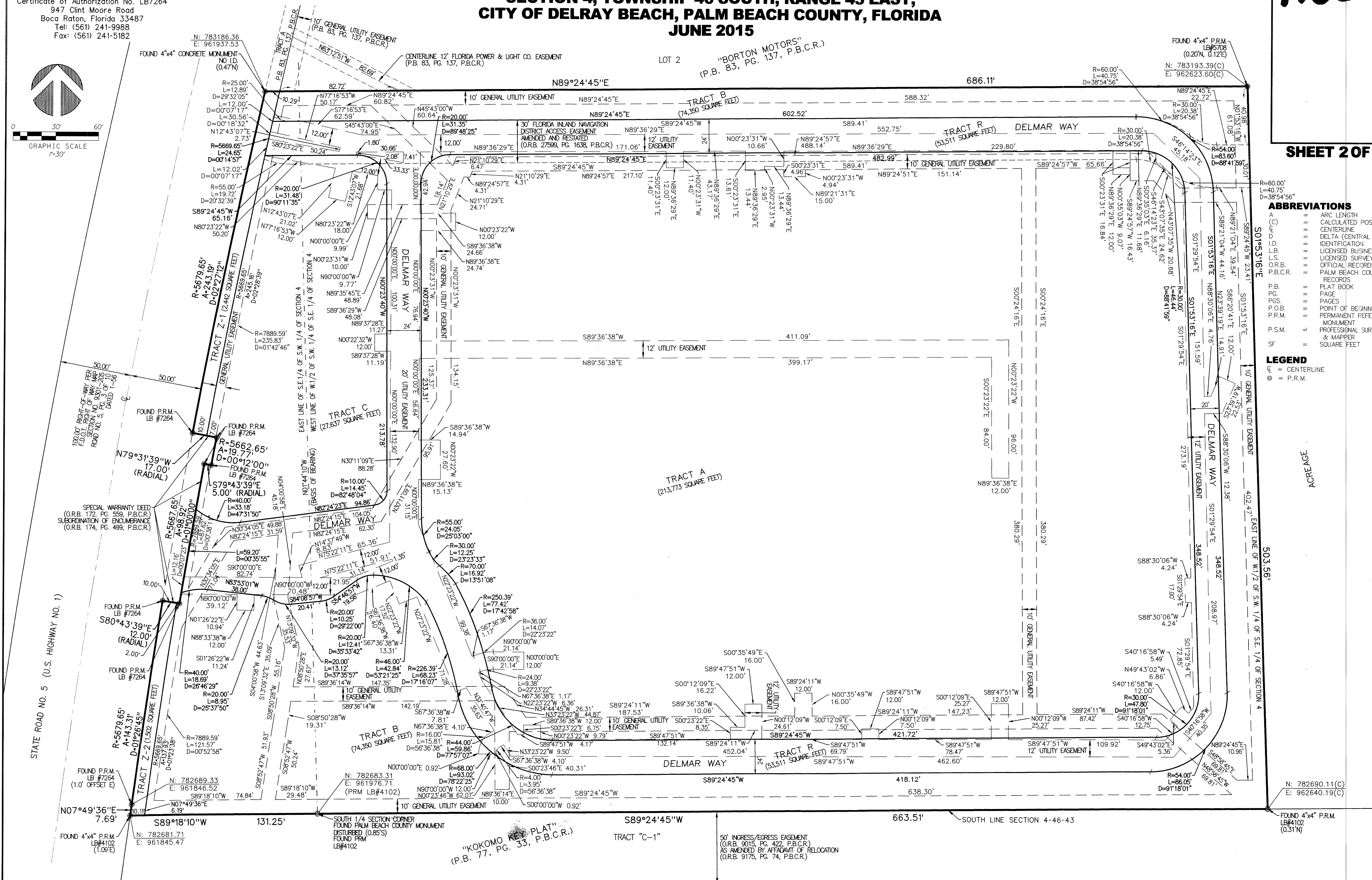


DELRAY PRESERVE REPLAT

**A REPLAT OF TRACT A, DELRAY PRESERVE,
 (PLAT BOOK 119, PAGES 133 & 134, PALM BEACH COUNTY RECORDS),
 SECTION 4, TOWNSHIP 46 SOUTH, RANGE 43 EAST,
 CITY OF DELRAY BEACH, PALM BEACH COUNTY, FLORIDA
 JUNE 2015**

126

SHEET 2 OF 2



ABBREVIATIONS

A	ARC LENGTH
(C)	CALCULATED POSITION
CL	CENTERLINE
Δ	DELTA (CENTRAL ANGLE)
I.D.	IDENTIFICATION
L.B.	LICENSED BUSINESS
L.S.	LICENSED SURVEYOR
O.R.B.	OFFICIAL RECORDS BOOK
P.B.C.R.	PALM BEACH COUNTY RECORDS
P.B.	PLAT BOOK
P.C.	PAGES
P.O.B.	POINT OF BEGINNING
P.R.M.	PERMANENT REFERENCE MONUMENT
P.S.M.	PROFESSIONAL SURVEYOR & MAPPER
SF	SQUARE FEET

LEGEND

CL	CENTERLINE
⊙	P.R.M.

ACREAGE

N: 782690.11(C)
 E: 962640.19(C)
 FOUND 4"x4" P.R.M. LB#4102 (0.31'N)

"KOKOMO KEY PLAT"
 (P.B. 77, PG. 33, P.B.C.R.)

50' INGRESS/EGRESS EASEMENT
 (O.R.B. 9015, PG. 422, P.B.C.R.)
 AS AMENDED BY AFFIDAVIT OF RELOCATION
 (O.R.B. 9175, PG. 74, P.B.C.R.)